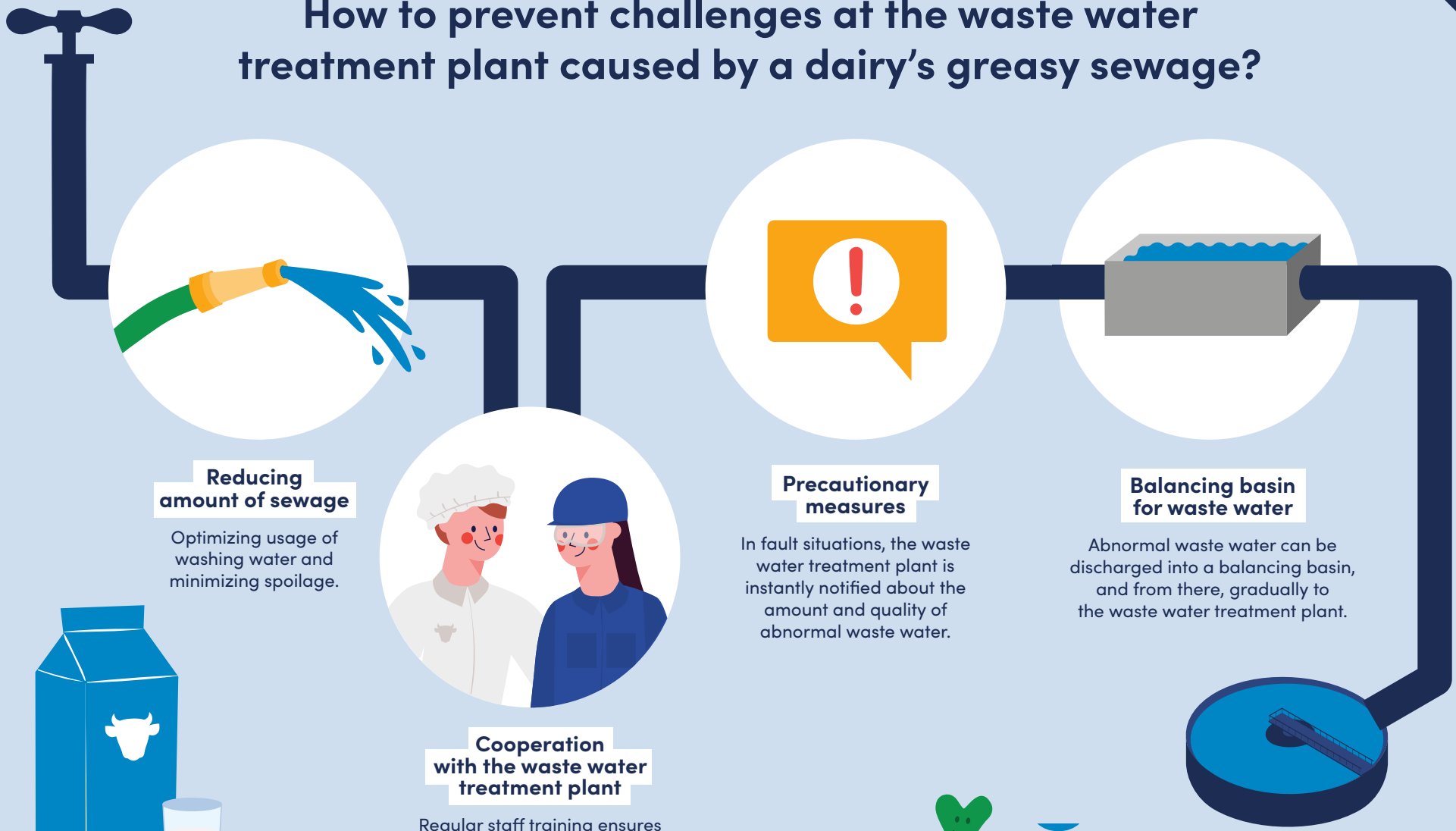


EXAMPLE
OF A SOLUTION!

How to prevent challenges at the waste water treatment plant caused by a dairy's greasy sewage?



Reducing amount of sewage

Optimizing usage of washing water and minimizing spoilage.



Precautionary measures

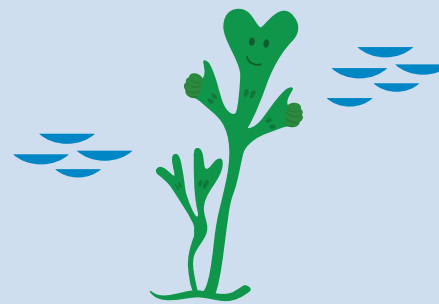
In fault situations, the waste water treatment plant is instantly notified about the amount and quality of abnormal waste water.

Balancing basin for waste water

Abnormal waste water can be discharged into a balancing basin, and from there, gradually to the waste water treatment plant.

Cooperation with the waste water treatment plant

Regular staff training ensures that everyone at the dairy plant is aware of possible challenges caused by its sewage at the treatment plant.



**Sewage from a dairy does not cause trouble in the waste water treatment plant.
Baltic Sea thanks!**