

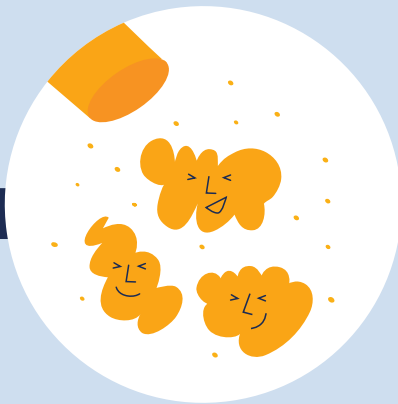
EXAMPLE
OF A SOLUTION!

How to stop medicine residues entering sewage from a pharmaceutical plant?



Analysis of sources

Assessment of risks and potential sources of medicine residues in the process.



Vacuuming medicinal dust

Vacuuming or wiping instead of washing to drain.



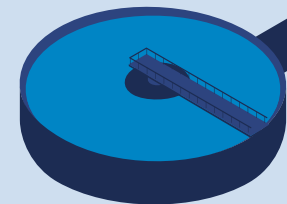
Collecting rinsing water

Pre-rinse water containing medicine residues is collected and transported to a refuse disposal plant.



Automated dosage of detergents

Diminishes amount of chemicals in sewage.



No medicine residues are carried to the waste water treatment plant.
Baltic Sea thanks!

